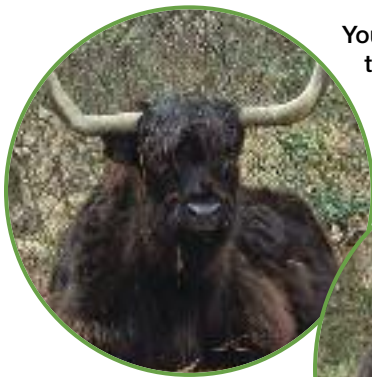




SUMMER 2020

VOL. 29, NO 2

Meet Our Two New Lovely Ladies!



You may have already seen their photo, now you can learn more! That's Sadie at left, and Mom, Evie, below.



Two large and shaggy ladies, this pair is a mother daughter duo and are a frequently seen breed in the U.K., but they also have quite a large following here. Evie (the Mom) and Sadie (daughter) have already gained their own following at Popcorn Park, perhaps due to their unusual looks.

The senior pair, 21 and 19 years old, could no longer be kept at a small educational farm when the town closed them down. Although we initially only took the pair in temporarily, it wasn't long before some papers were signed and they (Cont'd page 2)

Who's Zoo?

1. She once belonged to a Wisconsin flight attendant who, when he settled down in NJ, found he could not keep her without a special permit. She's quite happy with us and another of her own species. Who is she?
 2. Sometimes unwanted Easter "gifts", sometimes injured or ill, all are welcome here. This sweet fella thinks your guessing who he is would be just ducky!
 3. When people talk about an outcast in the family, he or she is referred to as the ... what? of the family. If you can guess that, you might know who this lady, once found traveling the Garden State Parkway, is!
- Answers Page 4*

Popcorn Park in the Time of Covid-19

This is an unprecedented event in the history of Popcorn Park. Established in 1977 to save the life of one raccoon caught in a leghold trap, Popcorn Park has never had to close its doors continuously. Ever.

The Covid-19 pandemic has caused the state of New Jersey to shut down all non-essential businesses, and sadly, an animal refuge is considered non-essential. Essential to our animals, of course, but not essential to the public, or worth risking the spread of disease. We get it.

But it affects every aspect of Popcorn Park, from animals to staff.



Staffer Jenn takes the time to give Andy, one of our resident goats, some extra popcorn.

How does the closing affect the animals?

Because of the size of our refuge (7 acres) and the fairly close distance of most animals to visitors, the animals clearly do miss their friends and the popcorn they share. But without a constant stream of people, many of the animals are now looking more to staff and seeking more interaction. Oh - and the popcorn, too! Thankfully, our staff has taken to spending extra time with all of them, ensuring them of constant companionship and interaction.

How does the closing affect staff?

It's a little tough on staff. They keep up with their schedules, wear all the proper PPE during the day, but it's so very (Cont'd. Page 2)

LEARN ABOUT Evie, Sadie, and Scottish Highland Cattle

Continued from Page 1

became permanent residents. Mom Evie is sweet and easygoing and loves to be brushed and Sadie is adjusting to her new caretakers being her new groomers.

(She'd prefer her mom do the grooming.)



They weigh in at about 1,100 pounds and have a healthy appetite. Although the breed's lifespan is estimated to be

around 20, Evie and

Sadie are in excellent health and we believe they have quite a few good years ahead of them.

But what, exactly, are Scottish Highland cattle?

* Scottish Highlanders originated in Scotland and the Outer Hebrides Islands.

* They are an ancient breed, brought to Britain by Neolithic farmers in the 2nd Millennium BC! They were first registered in the U.K. in 1885.

* They were originally raised for both milk and meat, but today are used primarily for meat.

* Their double, wooly coats may be red, ginger, black, yellow, dun, and even brindle, and help them survive in very cold climates.

* Bulls can weigh up to 1,800 pounds, and heifers, 1,100.

* They have a rather docile temperament, but are very protective of their young.

* They are excellent foragers, which makes them ideal to live in a wide variety of terrains that other cattle would not negotiate, or on land which is otherwise unsustainable for most agriculture.

* The breed has a clear herd structure and hierarchy which reduces aggression. Social standing is determined by sex and age.



PHOTO: RACONCAGUA / WIKIPEDIA

Popcorn Park in the Time of Covid-19

continued from Page 1

quiet without visitors. Happily, they find the time to interact with the animals and provide them with a little more attention than usual.

How else has it affected Popcorn Park?

Not surprisingly, Popcorn Park is facing an extreme loss in revenue from not seeing all the people that love coming to visit over the spring and summer months and who now cannot do so. As a non-profit organization, this is of deep concern to us.

What can people do to help?

More than ever, it is so important that people renew their membership to the Zoological Society and renew if you sponsor an animal in the Wildlife Club. **

Did you know that you can now belong to the Zoological Society without choosing a level of membership? You can simply make an annual donation to the Zoological Society and we will send you a copy of ZoonooZ by mail or in your Inbox, whichever you prefer, three times a year.

You can also buy items from our Wish List or send gift cards from Amazon and we will utilize them to help feed and care for the Refuge residents.

When will Popcorn Park re-open?

We wish we knew. We may be open by the time you are reading this! (Here's hoping!) Check at ahscares.org or on Facebook - Popcorn Park Animal Refuge - for the latest updates.

From the tiniest parakeet in our aviary to our largest tiger (Odin), please know we are deeply grateful for your support of all we do for animals. Truly, we hope to see you soon.

** We are extending all memberships and sponsorships the same amount of time that Popcorn Park is closed.

THEY'RE SMARTER THAN WE THINK!

You've always enjoyed their spunky sense of humor and acrobatics, but did you know that squirrels use some very advanced thinking behaviors?

When squirrels know that they are being watched by a potential thief of their

food stash, they pretend to bury the acorn, but instead hide it in their mouth. Squirrel expert Dr. Michael A. Steele points out that this behavior involves rather advanced decision-making, meeting the criteria of tactical deception, previously thought to only occur in primates. Our two resident cuties above, Snowball (right) and Ponz, have no need of hiding food from one another, but they still might want to save a favorite snack for later on.



Looking for something for the kiddos to do?

We have updated our Popcorn Park Coloring Book, and it is now available for free download on our website. Just go to ahscares.org/giftshop and then to Publications.

You can also order a paper version for only \$1.00 each online or by mail at our Popcorn Park address.



The Cost of Online Shopping to Our Planet

With the onset of the global pandemic came a huge expansion in online shopping and delivery. Although a lifesaver for some, this expansion has also taken a toll on the environment - mounds of additional plastic, cardboard, bubble-wrap, refrigeration packaging materials, paper, etc.

But all that makes it a great time to think about how we can help our planet. Here are a handful of ways:

1. Recycle! If you haven't been doing it before, start now!

2. Repurpose/Donate - can a cardboard box be a playhouse for the kids? Cleaning out your closets? Before you trash something, think about what it could be or who else could use it.



3. Make your own DIY cleaning products - get spray bottles and make up cleaning mixes using vinegar and/or sanitizing sprays using bleach. (Research first to be sure of proper proportions.)

4. Use your freezer! Did you know that, according to the USDA, 30-40% of America's food goes to waste? It's the #1 item in landfills, a sad comment when so many are going hungry in our own country. Plan when you shop as to what can go in the freezer when its shelf life is about to expire, whether produce or foods you've cooked or baked.

5. Upgrading your phone? Don't junk it - donate it to a worthy cause such as Secure the Call (securethecall.org) who will clean the data and provide it to reputable agencies working with domestic violence victims, seniors who can't afford a phone, etc.

It's our planet - show it some love!

Join the Zoological Society & Save on Visits All Year Long

Yes! I want to help support Popcorn Park. Sign me up for the Zoological Society!

Please sign me up as a new member at the membership level below:

Please renew my membership at the level below:

- \$75 - Family \$60 - Single
 \$50 - Golden Opportunity \$90 - Sustaining
 \$150 - Donor \$500 - Patron \$1,000 - Sponsor

Zoological Society General Support - Enclosed is a donation of \$ _____. Please send me the ZoonooZ for one year!

My Name: _____

Address: _____

City, State, Zip: _____

You can also join online where you will receive the ZoonooZ digitally or you can request it by mail.
<https://www.ahscares.org/contentpage/4185>

Enjoying the great outdoors!

As we move into spring and summer, some of our residents are moved from the warm protection of their inside winter environments to the great outdoors. Come visit with our friends as they enjoy sunshine again!



First out, our caimans! Croc, at about 30 years old, is a long-time resident at Popcorn Park and shares his pond with Dile, the female caiman he came with..

Due to the extreme amount of pollen in the Pine Barrens where Popcorn Park is located, we wait to move our turtles, tortoises and large birds out until the worst has passed. But by mid-late June, they are enjoying it all.

Max, an Aldabra tortoise, weighs in at 450 pounds, and is escorted to his outside area with the help of 5 staff members and a pickup truck!



Doo Wop, at left, our handsome Catalina macaw, moves from his spacious indoor digs - along with Bonnie and Skittles, to huge protected outdoor areas where he can enjoy fresh air and his favorite occupation, people-watching.

Mango's an old-timer at 11 years old, and has been with us almost that whole time. He's currently 4' long.



ZOONOOZ

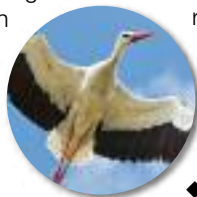
Popcorn Park
P.O. Box 43
Forked River, NJ 08731-0043

Non-Profit Org.
U.S. Postage
PAID
ASSOCIATED
HUMANE SOCIETIES

Some Good News in the Natural World, in Part Due To The Global Pandemic

There's plenty to not write home about in these uncertain and often frightening times. But as the human population and all its various activities have grinded to a halt, there are some positive effects as well

- ◆ Wild white storks hatched in the UK for the first time in centuries.
- ◆ Due to a lack of traffic and industrial activity, Mt. Everest is visible from Katmandu for the first time in living memory.



- ◆ In 2019, for the first time since 1885, the United States used more energy from renewable sources than from coal.
- ◆ Tokyo's Sumida Aquarium, closed during the coronavirus pandemic, urges people to Facetime its lonely garden eels.
- ◆ Due to the coronavirus pandemic, India's CO2 emissions fell 30 percent in April, the first decline in 40 years.
- ◆ Mexico seized a shipment of 15,000 freshwater turtles, some of them endangered species, en route to China.

Thank you to the Sierra Club. Read these stories and more at: sierraclub.org

A Home for An Iguana



PHOTO COURTESY: WIKIPEDIA

Popcorn Park is currently home to 17 iguanas. All were once someone's pets, and no longer wanted. These are adults of varying ages and sizes, and need experienced iguana/reptile homes. If you have a little extra love and room for one of our current residents, please contact us at: NJhumane@ahsppz.org or call 609-693-1900 and ask for Renee.

Answers to Who's Zoo?



pal-ing around with the other ducks, domestic or wild. How do we know which one is Pete? We'll never tell!

1. That would be our adorable little Kay Leigh, a White-Faced Capuchin monkey, who shares her area with Buster. He was once owned illegally as a pet, as well. The two are active, fun-loving, and get each other totally riled up in play.
2. If an Easter "gift", it could only be a bunny, chick or duck. In this case, it's Pete, a domestic white duck, who enjoys pal-ing around with the other ducks, domestic or wild. How do we know which one is Pete? We'll never tell!
3. This stunning lady with the gold eyes is the "black sheep" of the Popcorn Park family, Sheeba. We were called to rescue two "goats" who were wandering around the Garden State Parkway. The other was a pregnant white sheep we named Reeba. Shortly after their arrival, she gave birth to two boys, North and South.

ZOONOOZ

ZoonooZ is published by the Associated Humane Societies/Popcorn Park

ZoonooZ Jeanne Balsam
Popcorn Park Gen. Mgr. ... John Bergmann

Photographer
John Bergmann

Please address all correspondence to:

John Bergmann/ ZoonooZ
Popcorn Park
PO Box 43
Forked River, NJ 08731-0043

Or e-mail: NJHumane@ahsppz.org

www.ahscares.org

Information filed with the Attorney General concerning this charitable solicitation may be obtained from the Attorney General of the State of New Jersey by calling (973) 504-6215. Registration with the Attorney General does not imply endorsement. Charitable Registration #-CH012-6200, Tax Exempt # 221 487122.